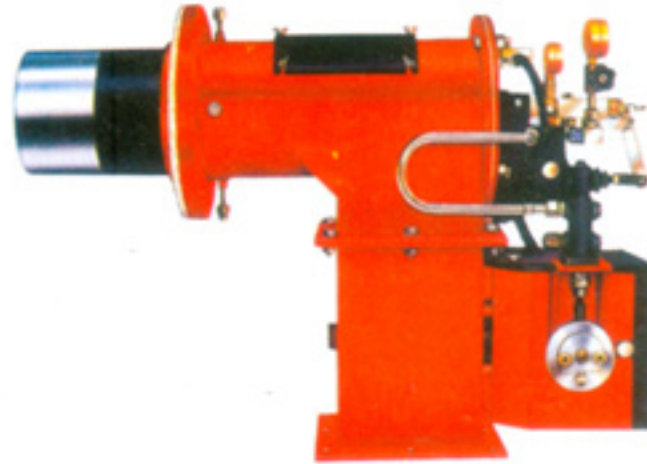


OIL FIRING EQUIPMENT:

Fully automatic, pressure jet return flow nozzle type oil firing equipment having a selector switch for changeover to manual operation.

CONTROLS:

- Automatic water level controller with visual indication and audible alarm.
- Oil solenoid valves
- Modulating or high/low motor
- Modulating or high/low pressure switch
- High pressure cutout switch
- Direct electric spark ignition by means of high voltage transformer
- Low oil temperature interlock
- Photoelectric cell



Oil Burner

WE ALSO SPECIALIZE IN:

Multifuel Boilers (Coal/Lignite /Leco/Husk/Bagasse/Wood/Oil/Any Combination Thereof)

Hot Water Generators, Economisers, Super Heaters, Thermic Fluid Heater, Hot Air Generators

SALES & SERVICE

We assist you in the selection of the correct size of boilers, boiler house layout, supply and erection of complete boiler house auxiliaries, supply of spares as well as commissioning and advising on the maintenance and operation of your boiler

SALES & SERVICE OFFICES AT :

Bangalore, Bhuvaneshwar, Cochin, Hyderabad, Kolcutta, Mumbai, Madurai, Tirupur & Sri Lanka.



SOUTHERN BOILERS AND EQUIPMENTS(P) LTD.

H.O.: Y-169, I Street, Annanagar, Chennai - 600 040
Telefax : 6215220, 6268685, 6204123, 6202009.
e-mail naitelsb@vsnl.com

Factory : 93, Sidco Industrial Estate, Kakkalur - 602 003.
Trivellore Dist., Tamil nadu. Phone 04116-62120, 63531.

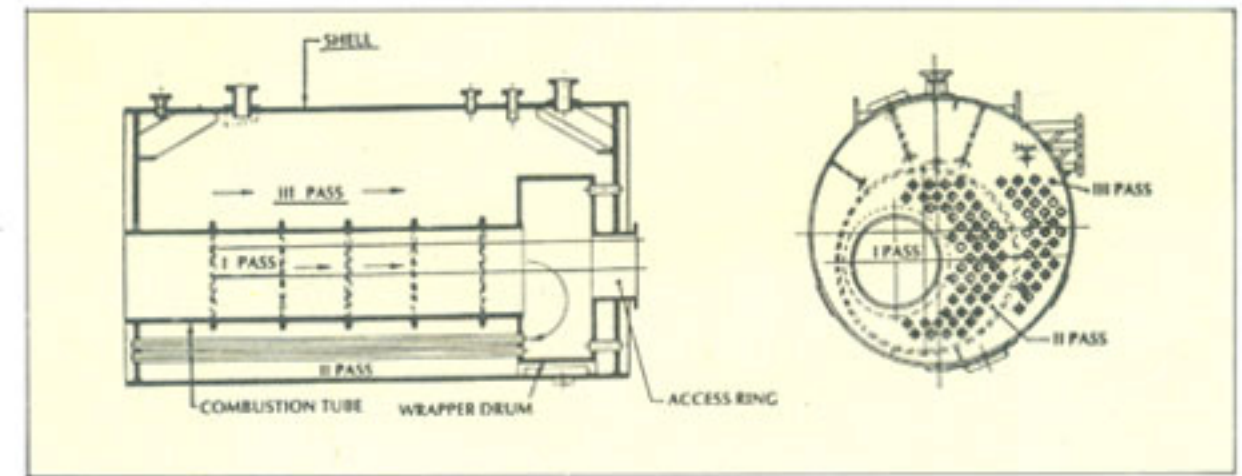
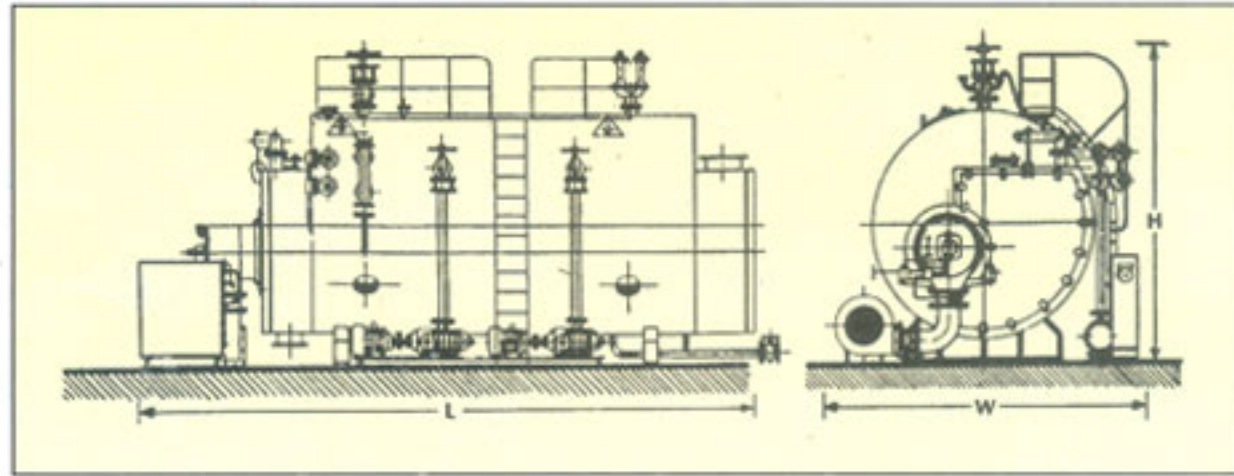
Ad Biz/ PRN-Chennai.

PACKAGED THREEPASS WETBACK BOILERS

OIL FIRED • GAS FIRED • OIL CUM-GAS FIRED



SOUTHERN BOILERS AND EQUIPMENTS(P) LTD.



BOILER MODEL	SBIO	75	01	15	02	025	03	04	05	06	08	100	120	140	160	180	200	220	250
STEAM OUTPUT F&A 100°C	kg.h	750	1000	1500	2000	2500	3000	4000	5000	6000	8000	10000	12000	14000	16000	18000	20000	22000	25000
LENGTH L	mm	4900	5400	5700	6000	6300	6500	6800	7500	8100	8200	8900	9400	10000	10000	9800	10400	10900	11600
WIDTH W	mm	1800	2000	2250	2250	2500	2500	2700	2800	2900	3100	3400	3400	3600	3600	4500	4500	4500	4600
HEIGHT H	mm	2200	2500	2750	2750	2900	2900	3100	3150	3250	3400	3700	3700	3900	3900	4600	4600	4600	4700
EMPTY WEIGHT APPROX	ton	5.0	7.0	9.0	10.0	12.0	14.0	16.0	19.0	21.0	26.0	32.0	36.0	40.0	47.0	50.0	55.0	57.0	64.0
FLUE GAS OUTLET	mm	180 x 200	180 x 250	250 x 350	250 x 400	280 x 400	300 x 450	350 x 520	350 x 550	370 x 730	420 x 860	480 x 950	520 x 1050	560 x 1150	600 x 1200	600 x 1350	650 x 1400	680 x 1460	700 x 1600
STEAM OUTLET VALVE	mm	40	40	50	65	80	80	100	100	125	125	150	150	200	200	200	200	200	250
WATER PUMP INLET	mm	25	25	25	25	25	25	40	40	40	50	50	50	65	65	65	65	65	65
OIL INLET RETURN	mm	40 20	40 20	40 20	40 20	40 20	40 20	40 20	40 20	40 20	50 25	50 25	50 25	80 40	80 40	80 40	80 40	80 40	80 40
BLOWDOWN VALVE	mm	25	25	25	25	40	40	40	50	50	50	50	50	65	65	65	65	65	65
CONNECTED LOAD	kw	12	16	21	21	21	27	27	29	33	43	52	63	67	86	102	120	135	150

Given above are the standard sizes for boilers. For sizes outside this range, contact us. Weights, valve sizes and electrical loads shown above are for 10.54 kg/cm² pressure and are indicative. This vary with boiler pressure.

Designed and built to the latest Indian Boiler Regulations, our packaged boilers have high sustained thermal efficiency. They are safe reliable, easy to maintain and simple to install.

The boilers have been designed for oil, gas and dual fuel firing and incorporate the latest safety requirements.

The standard range upto 25 TPH are of full wetback construction, whereas boilers of higher capacity are with finned tube water wall at the rear.

The design with large furnace area ensures a low furnace exit temperature and avoids the risk of tube cracking and leakage. The optimum velocity of gases through the convective tubes ensures high

coefficient of heat transfer and keeps the tubes clean for long periods.

Staggered tube design avoid dead spaces, enables quicker heating, faster steaming and ensures high quality dry steam. Furthermore it prevents accumulation of corrosive oxygen and carbon dioxide bubbles on tube surface.

Careful matching of the boiler and burner contributes to its reliability and results in efficient and controlled combustion. The burner assures precise control over the airfuel ratio throughout the modulating range. The precise control is evidenced by a constant high carbon dioxide in the flue gas with little carbon monoxide.

STANDARD SCOPE OF SUPPLY

THE BOILER

- Shell duly insulated and clad
- Manhole with cover
- Explosion relief door
- Ladder, platform
- Lifting lugs

MOUNTINGS AND FITTINGS

- Steam stop valve
- Auxiliary steam stop valve
- One no. stop valve and one no. non-return valve in each feed water line.

- Double post spring loaded safety valve
- Rack and pinion type bottom safety blow down valve
- Stop valves for water level controller
- Fusible plug
- Steam pressure gauge
- Air vent and inspector's test gauge Gock
- Water level gauges with protectors
- Interconnecting piping

FEED PUMPS:

- Electric motorised multistage pump numbers